

Large Intestine (Da Chang)

The Large Intestine is the Yang Organ of the Metal Element. The main function of the Large Intestine is to receive the turbid parts of food and fluids sent down from the Small Intestine. This remaining material continues to move downward in the Large Intestine with some water being absorbed. This process culminates in formation of the faeces which is excreted under the control of the Large Intestine.

Many of the functions attributed to the large intestine in western medical bioscience (WMB) come under the functional responsibility of the Spleen in TCM. Thus,

"The Spleen controls the transformation and transportation of food and fluids throughout the digestive system, including the Small and Large Intestine. For this reason ... symptoms and signs such as diarrhoea, abdominal distension and pain are usually attributed to a Spleen disharmony" (Maciocia, 1989).

Su Wen, chpt. 8, p. 58. "The Large Intestine is the official of transportation from whom change in the shape of things is derived." (Lu, 1990).

'The Large Intestine is responsible for transit. The residue from transformation stems from it.' (Su Wen, chpt 8. Larre & Rochat, 1992a, 1992b).

Shou Yang Ming Da Chang Jing Large Intestine Channel of hand Yang Ming

LARGE INTESTINE PRIMARY MERIDIAN

The primary Large Intestine Channel of hand Yang Ming starts at the radial (lateral) side of the tip of the index finger, at LI-1 (Shang Yang), and travels proximally between the 1st and 2nd metacarpal bones on the dorsum of the hand (LI-4, He Gu). It runs between the tendons of muscles extensor pollicis longus and extensor pollicis brevis at the wrist, through the anatomical "snuff box" (LI-5, Yang Xi).

It continues along the radial border of the forearm to the lateral aspect of the elbow (LI-11, Qu Chi), then up the lateral aspect of the arm to the shoulder joint, to its highest point on the shoulder (LI-15, Jian Yu). It crosses over the shoulder to the angle between the acromion process and the spine of the scapula (LI-16, Ju Gu). It intersects the Small Intestine Channel of hand Tai Yang at SI-12 (Bing Feng), then runs to the depression immediately below the spinous process of the 7th cervical vertebra, where it intersects Du Mai at DU-14 (Da Zhui). All six Yang main Channels meet at this point.

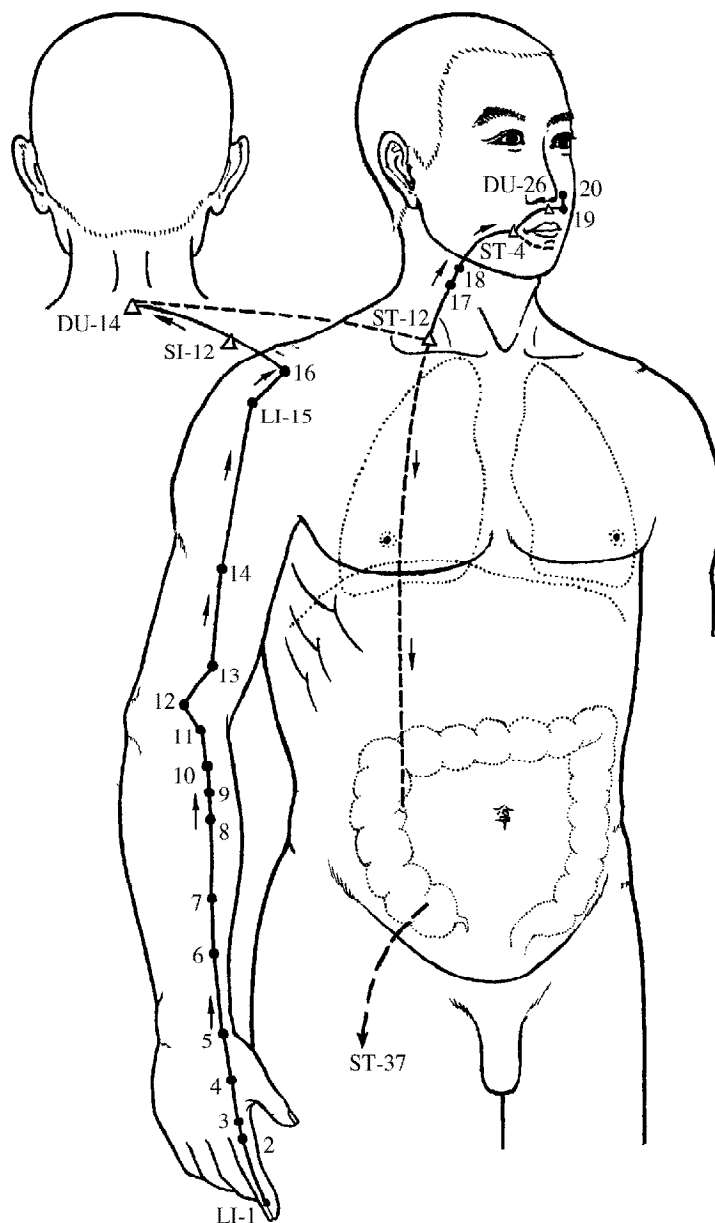
It then travels anteriorly to the supraclavicular fossa (ST-12, Que Pen).

The main pathway descends past ST-13 (Qi Hu) to penetrate (connect to) the Lung Organ. It passes through the diaphragm and homes to its pertaining Organ, the Large Intestine. A branch descends to the lower limb and emerges at ST-37 (Shang Ju Xu) on the leg, which is the lower Sea/Uniting-He point of the Large Intestine.

Another branch separates from the main Channel in the supraclavicular fossa (ST-12, Que Pen). It passes superficially up the neck (LI-18 (Fu Tu) and traverses the cheek before entering the lower gums and teeth. From there it curves superficially around the lips, passes the Stomach Channel of foot Yang Ming at ST-4 (Di Cang), then meets its bilateral Channel from the opposite side of the body at the philtrum, at DU-26 (Shui Gou). [It very likely also connects to Ren Mai at REN-24 (Cheng Jiang)].

It continues around the nostril on the opposite (contralateral) side and terminates beside the nasal ala (LI-20, Ying Xiang). There the Large Intestine Channel links with the Stomach Channel of foot Yang Ming. The right and left Large Intestine Channels cross over to the opposite sides of the body at the philtrum.

There are 20 points on the Large Intestine Meridian, and 7 intersecting points on other Meridians. This Meridian pertains to the Large Intestine Organ and connects to the Lung Organ. It also connects directly with the Stomach Organ.



Primary Large Intestine Meridian (modified from Shandong, 1982, p. 9)

FLOW OF QI/ DISTRIBUTION OF POINTS:

Upper Limb: LI-1 (Shang Yang), LI-2 (Er Jian), LI-3 (San Jian), LI-4 (He Gu), LI-5 (Yang Xi), LI-6 (Pian Li), LI-7 (Wen Liu), LI-8 (Xia Lian), LI-9 (Shang Lian), LI-10 (Shou San Li), LI-11 (Qu Chi), LI-12 (Zhou Liao), LI-13 (Shou Wu Li), LI-14 (Bi Nao).

Shoulder, Neck, Trunk: LI-15 (Jian Yu), LI-16 (Ju Gu), SI-12 (Bing Feng), DU-14 (Da Zhui), ST-12 (Que Pen).

[Lower Limb: ST-37 (Shang Ju Xu)].

Head, Neck: LI-17 (Tian Ding), LI-18 (Fu Tu), ST-4 (Di Cang), [REN-24 (Cheng Jiang)], DU-26 (Shui Gou), LI-19 (He Liao), LI-20 (Ying Xiang).

MERIDIANS INTERSECTED BY THE LARGE INTESTINE CHANNEL:

Small Intestine Channel of hand Tai Yang: SI-12 (Bing Feng).

Stomach Channel of foot Yang Ming: ST-4 (Di Cang), ST-12 (Que Pen), [ST-37 (Shang Ju Xu)].

Du Mai (Governing Vessel): DU-14 (Da Zhui), DU-26 (Shui Gou).

Ren Mai (Conception Vessel): [REN-24 (Cheng Jiang)].

MERIDIANS INTERSECTING ON THE LARGE INTESTINE CHANNEL:

Lung Channel of hand Tai Yin: LI-1 (Shang Yang)

Stomach Channel of foot Yang Ming: LI-20 (Ying Xiang)

Yang Qiao Mai (Yang heel/motility Vessel): LI-15 (Jian Yu), LI-16 (Ju Gu)

Yang Wei Mai (Yang linking Vessel): [LI-14 (Bi Nao)]

LARGE INTESTINE SPECIAL POINTS/ COMMAND POINTS:

LI-1 (Shang Yang): Metal, Well-Jing. Horary point.

LI-2 (Er Jian): Water, Spring, Gushing-Ying.

LI-3 (San Jian): Wood, Stream, Transporting-Shu.

LI-4 (He Gu): Yuan-Source.

LI-5 (Yang Xi): Fire, River, Traversing-Jing.

LI-6 (Pian Li): Luo-Connecting

LI-7 (Wen Liu): Xi-Cleft, Accumulation.

LI-11 (Qu Chi): Earth, Sea, Uniting-He.

ST-37 (Shang Ju Xu): lower Sea, Uniting-He point of the Large Intestine Channel.

ST-25 (Tian Shu): front Alarm-Mu, Collecting point.

BL-25 (Da Chang Shu): back Associated-Shu, Transporting point.

LARGE INTESTINE PRIMARY MERIDIAN SIGNS/SYMPTOMS:

Fever, parched, dry mouth and thirst, sore throat, nosebleed, toothache, redness and pain of the eyes, pain and swelling of the neck, palpable red swelling and inhibited flexion and extension of the fingers (motor impairment). Other signs and symptoms may include pain and sensation of cold, or painful and palpably hot (burning), red swelling in the region of the shoulder blade, shoulder and upper arm. (mainly from Ellis et al., 1988; O'Connor & Bensky, 1981)

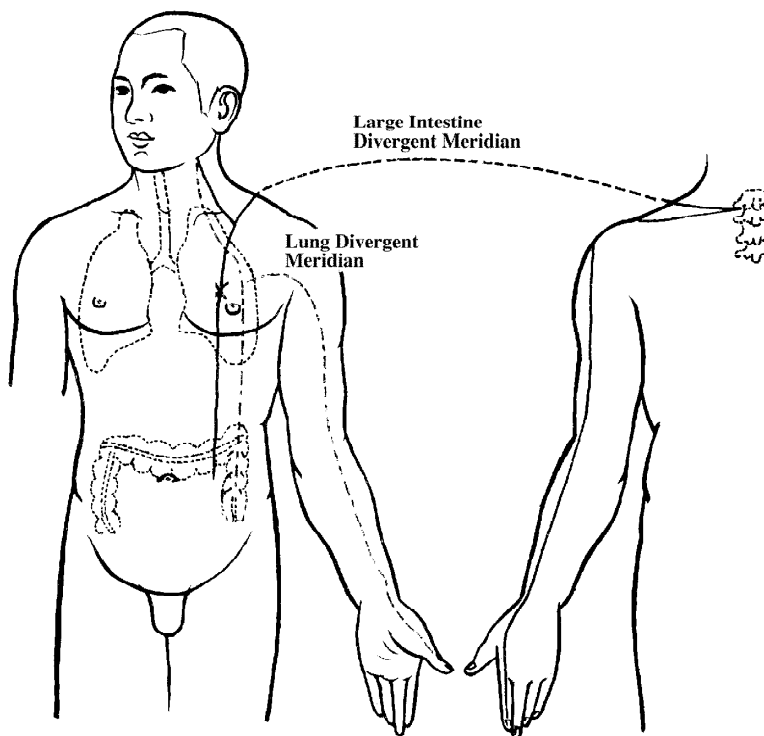
LARGE INTESTINE ORGAN SIGNS/SYMPTOMS:

Lower abdominal or periumbilical pain, abdominal pain which migrates/wanders, borborygmus, loose stool, excretion of thick, slimy yellow matter/mucus. Possibly also rapid breathing, belching and dyspnoea. (mainly from Ellis et al., 1988; O'Connor & Bensky, 1981)

LARGE INTESTINE DIVERGENT MERIDIAN

The Large Intestine Divergent Meridian leaves the primary Large Intestine Channel on the hand. It ascends the upper limb and crosses the shoulder to the breast region.

A branch diverges at the top of the shoulder near LI-15 (Jian Yu). It crosses to the nape of the neck (to the 7th cervical vertebra), enters the spine, then enters the body cavity and proceeds downward to the Large Intestine Organ. It also connects with the Lung Organ.



Another branch ascends from the shoulder and rises along the throat. It surfaces at the supraclavicular fossa and rejoins its primary Channel, the Large Intestine Channel of hand Yang Ming, near LI-18, Fu Tu.

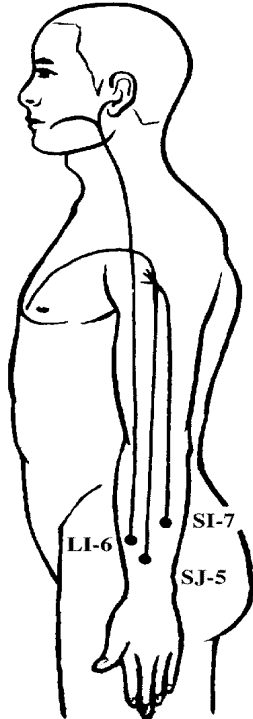
(mainly from Ellis et al., 1988; O'Connor & Bensky, 1981)

Metal Divergent Meridians (from Cheng 1987, p. 89)

LARGE INTESTINE LUO (CONNECTING) MERIDIAN

The Large Intestine Luo Meridian separates from the primary Large Intestine Channel 3 cun proximal to the wrist at LI-6 (Pian Li), and connects to the Lung Channel of hand Tai Yin.

Another branch separates from the primary Channel at the same point and ascends the upper limb. It passes through the shoulder region, at LI-15 (Jian Yu), and proceeds to the angle of the jaw, where it divides into two branches.



One branch spreads over the teeth. The other branch enters the ear and connects with the primary Meridians of the Gall Bladder Channel of foot Shao Yang, San Jiao Channel of hand Shao Yang, Small Intestine Channel of hand Tai Yang and Stomach Channel of foot Yang Ming.

Signs/ Symptoms:

Shi: tooth decay, deafness

Xu: tooth sensitivity to cold, Bi, fullness and congestion in the chest, diaphragmatic area

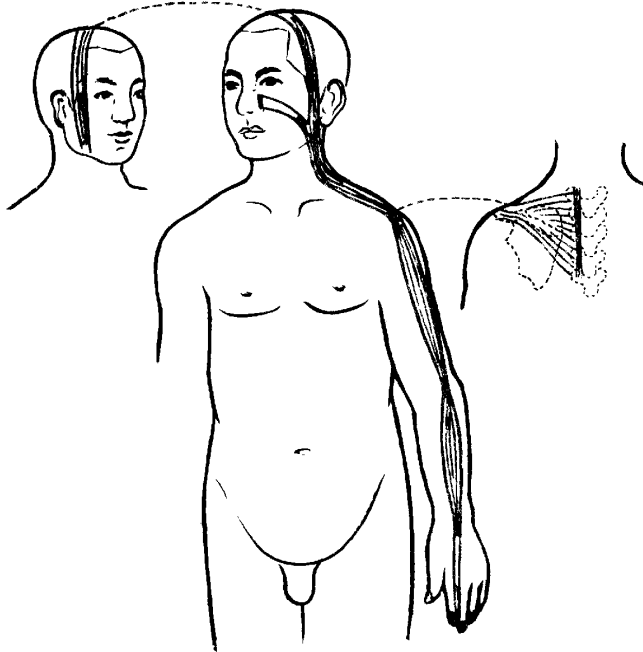
(mainly from Ellis et al., 1988; O'Connor & Bensky, 1981)

Yang Luo Meridians, Upper Limb

(modified from Cheng 1987, p. 91)

LARGE INTESTINE MUSCLE-TENDINO (SINEW) MERIDIAN

The Large Intestine Muscle-Tendino Meridian (MTM) begins at the distal end of the index finger and binds at the dorsum of the wrist. It continues up the forearm, binds at the lateral aspect of the elbow, then travels up along the lateral aspect of the arm, to bind at the shoulder, near LI-15 (Jian Yu). A branch separates at the shoulder, encircles the scapula, and attaches to the spine.



Another branch separates at the shoulder and ascends along the neck. This branch divides at the jaw with one fork binding at the side of the nose. The other fork runs up over the head, anterior to the MTM of the Small Intestine Channel of hand Tai Yang, and binds at the mandible on the opposite side of the head.

(mainly from Ellis et al., 1988;
O'Connor & Bensky, 1981)

Large Intestine Muscle-Tendino Meridian
(from Cheng 1987, p. 105)

Signs/ Symptoms:

Stiffness, strain or (muscle) spasms and pain along the course of the MTM, inability to raise the arm at the shoulder, inability to turn the neck from side to side.