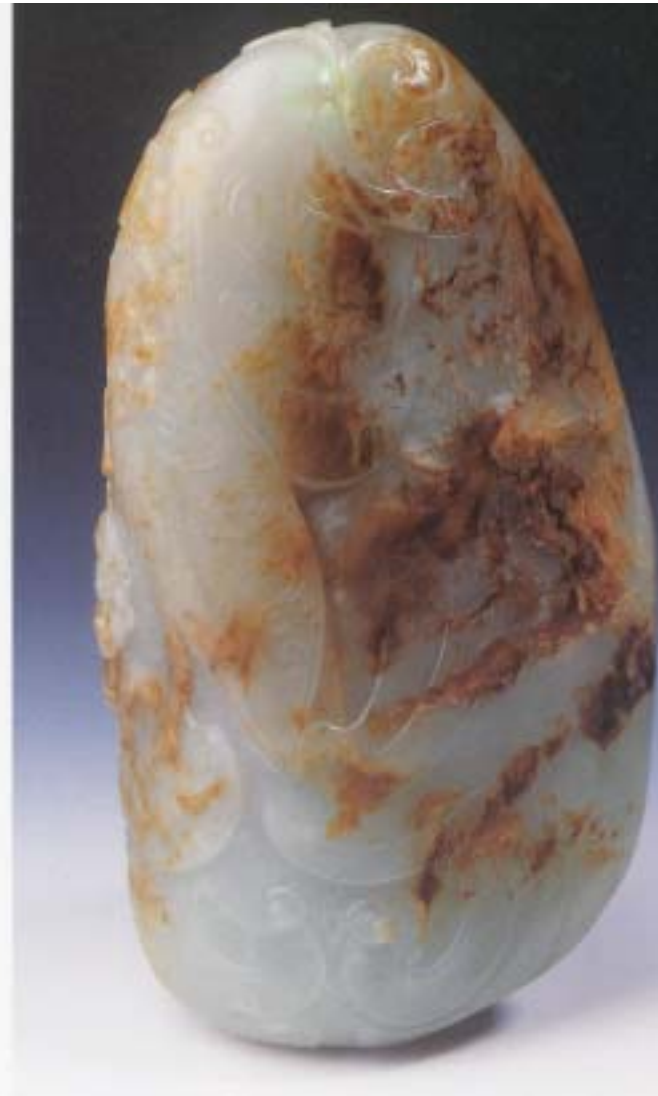


Bird-shaped vessel. Southern Song or Yuan dynasty (12th-14th century C.E.). Whitish nephrite with russet markings, H 7.6 cm, L 7.3 cm, W 3.5 cm. Museum of Far Eastern Art, Bath, England.



Pebble with phoenix design. Ming dynasty (1368-1644). Whitish nephrite with traces of rust-coloured "skin", H 3.4 cm, L 11.2 cm, W 6.4 cm. Museum of Far Eastern Art, Bath, England.